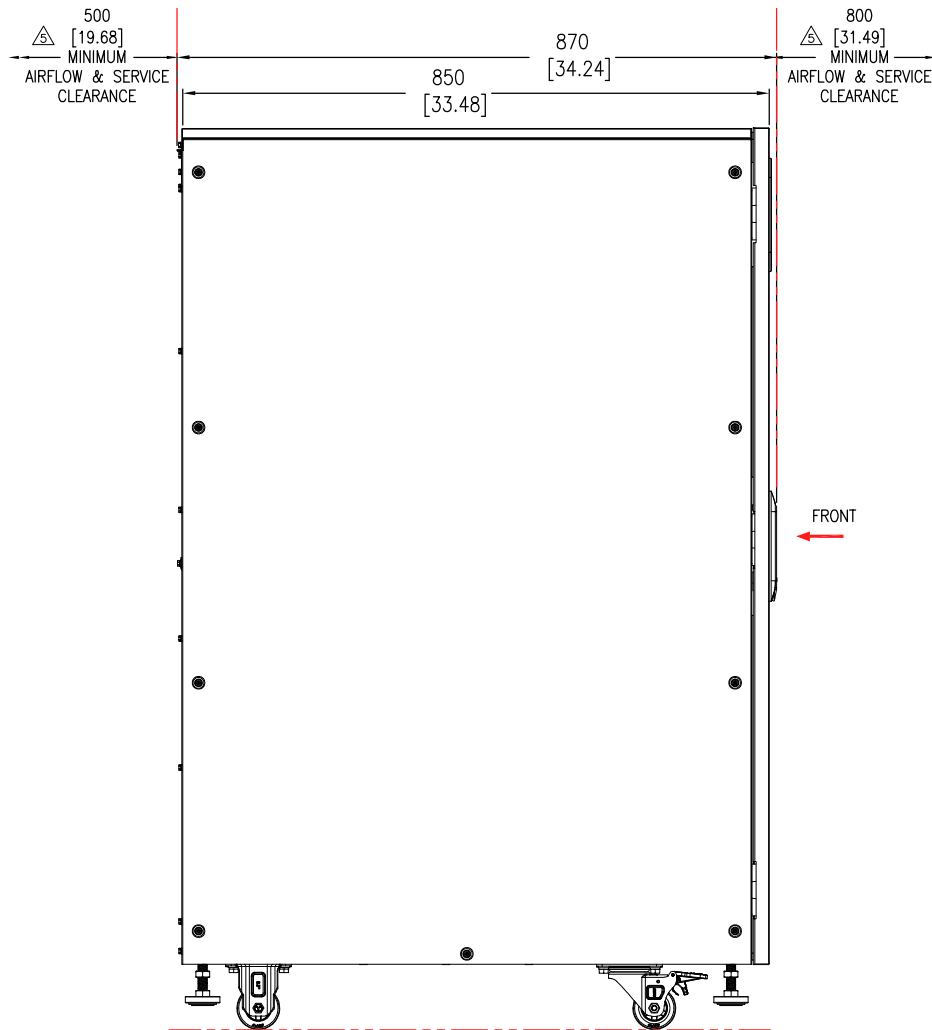
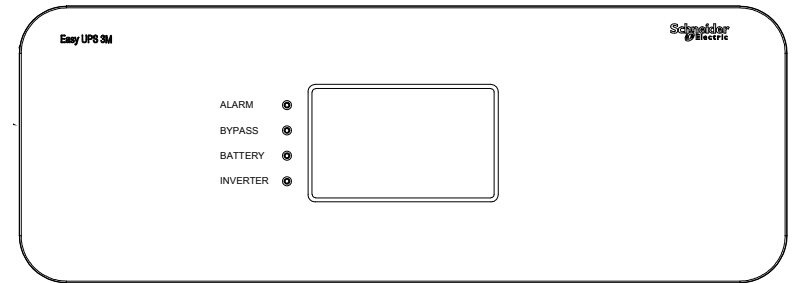


FRONT VIEW



SIDE VIEW



USER INTERFACE (ENLARGED VIEW)

NOTES:

1. INSTALLATION SHALL COMPLY WITH ALL APPLICABLE NATIONAL AND LOCAL ELECTRICAL REGULATIONS.
 2. REFER TO PRODUCT DOCUMENTATION FOR ADDITIONAL DETAILS PRIOR TO INSTALLATION AND SITE PREPARATION WORK.
 3. ALL DIMENSIONS ARE IN MILLIMETERS [INCHES].
 4. WEIGHT OF THE UNIT IS 304kg [670.2 lb].
 5. FRONT AND REAR CLEARANCE ARE FOR AIRFLOW AND SERVICE ACCESS, TOP CLEARANCE ARE FOR SERVICE ACCESS ONLY. CONSULT WITH THE LOCAL SAFETY CODES AND STANDARDS FOR ANY ADDITIONAL REQUIREMENTS OF LOCAL AREA.
 6. COLOR: RAL 9003.
 7. PROTECTION CLASS: IP20.
- OPERATING TEMPERATURE: 0°C TO 40°C [32°F TO 104°F].

THIS DRAWING AND SPECIFICATIONS HEREIN ARE THE PROPERTY OF SCHNEIDER ELECTRIC AND SHALL NOT BE COPIED, REPRODUCED OR USED IN WHOLE OR IN PART, AS THE BASIS FOR THE MANUFACTURE OR SALE OF ITEMS WITHOUT WRITTEN PERMISSION FROM SCHNEIDER ELECTRIC. THIS DRAWING IS BASED UPON LATEST AVAILABLE INFORMATION AND IS SUBJECT TO CHANGE WITHOUT NOTICE.

Schneider Electric

TITLE:
Schneider Electric Easy UPS 3M
200kVA, 400V, 3PH
WITHOUT BATTERY MODULES
GENERAL ARRANGEMENT

PROJECT: SUBMITTAL DRAWINGS SHEET 1 OF 6

DWG NO: E3MUPS200KH

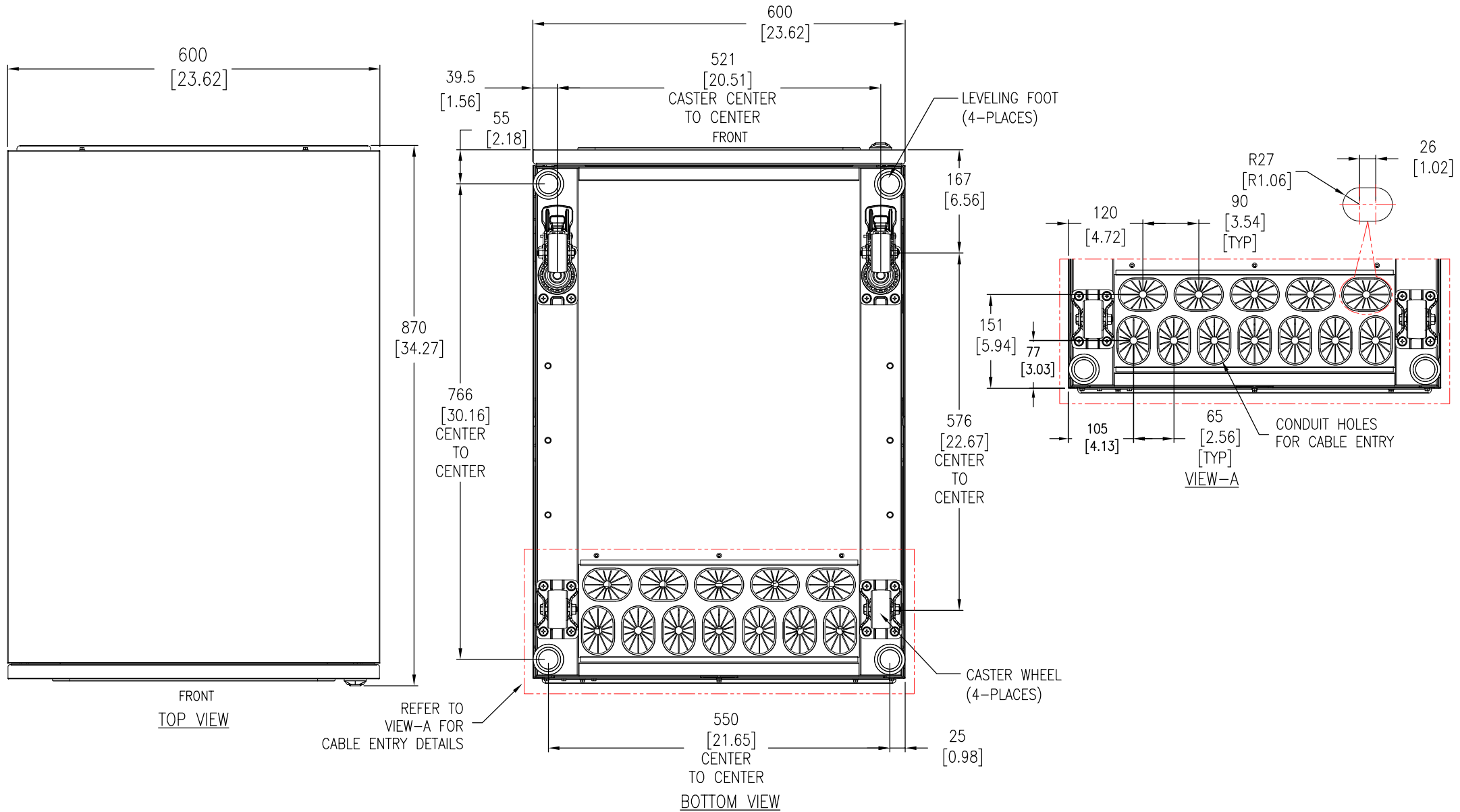
DRAWN: DIBYA/JAYAPRAKASH 11-JUN-24

ENGINEER: Compbell Bai 11-JUN-24

APPROVED: YaPing YANG 11-JUN-24

REV. 1

FIRST
ANGLE
PROJECTION



- NOTES:**
- 1.INSTALLATION SHALL COMPLY WITH ALL APPLICABLE NATIONAL AND LOCAL ELECTRICAL REGULATIONS.
 - 2.REFER TO PRODUCT DOCUMENTATION FOR ADDITIONAL DETAILS PRIOR TO INSTALLATION AND SITE PREPARATION WORK.
 - 3.ALL DIMENSIONS ARE IN MILLIMETERS [INCHES].

THIS DRAWING AND SPECIFICATIONS HEREIN ARE THE PROPERTY OF SCHNEIDER ELECTRIC AND SHALL NOT BE COPIED, REPRODUCED OR USED IN WHOLE OR IN PART, AS THE BASIS FOR THE MANUFACTURE OR SALE OF ITEMS WITHOUT WRITTEN PERMISSION FROM SCHNEIDER ELECTRIC. THIS DRAWING IS BASED UPON LATEST AVAILABLE INFORMATION AND IS SUBJECT TO CHANGE WITHOUT NOTICE.

Schneider Electric

TITLE:
Schneider Electric Easy UPS 3M
200kVA, 400V, 3PH
WITHOUT BATTERY MODULES
TOP & BOTTOM VIEW

PROJECT: SUBMITTAL DRAWINGS SHEET 2 OF 6

DWG NO:	E3MUPS200KH	REV.	1
DRAWN:	DIBYA/JAYAPRAKASH	11-JUN-24	FIRST ANGLE PROJECTION
ENGINEER:	Compbell Bai	11-JUN-24	
APPROVED:	YaPing YANG	11-JUN-24	

REFER TO VIEW-A
SHEET-4
FOR DETAILS

POWER
MODULES

MAINTENANCE
BYPASS SWITCH

UNIT OUTPUT
SWITCH

509
[20.04]

288
[11.35]

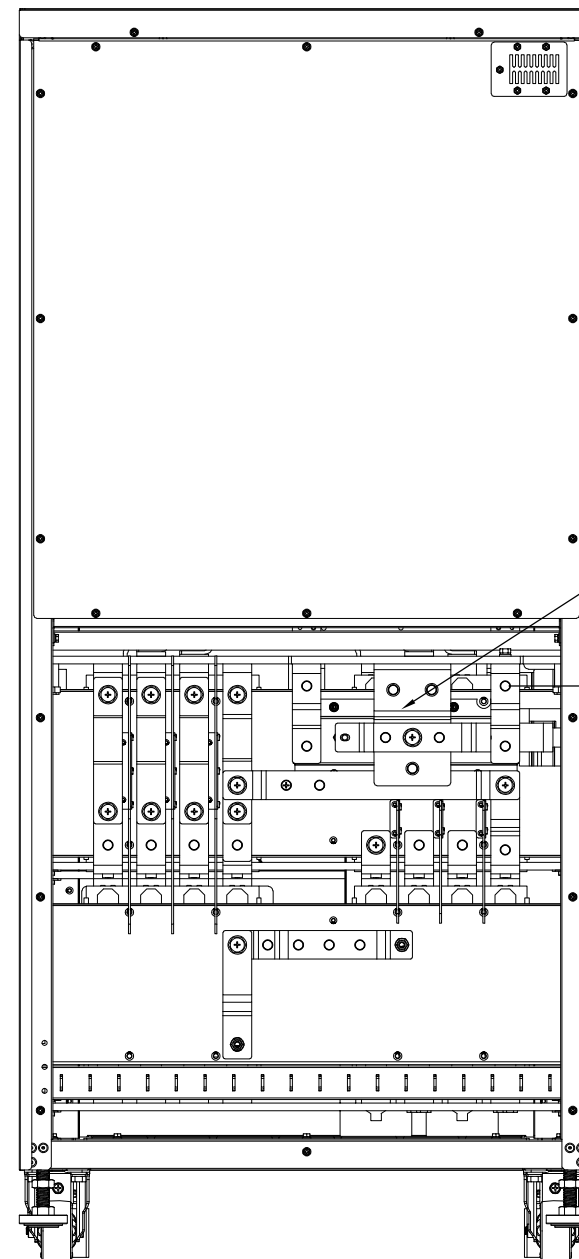
138
[5.42]

280
[11.02]

FRONT VIEW

INPUT
STATIC SWITCH

UNIT INPUT
SWITCH



CONNECTION TERMINALS
REFER TO VIEW-C,
SHEET-4
(PROTECTIVE COVER
REMOVED)

600
[23.63]

REAR VIEW
(TERMINAL PROTECTIVE COVER REMOVED)

NOTES:

1. INSTALLATION SHALL COMPLY WITH ALL APPLICABLE NATIONAL AND LOCAL ELECTRICAL REGULATIONS.
2. REFER TO PRODUCT DOCUMENTATION FOR ADDITIONAL DETAILS PRIOR TO INSTALLATION AND SITE PREPARATION WORK.
3. ALL DIMENSIONS ARE IN MILLIMETERS [INCHES].

THIS DRAWING AND SPECIFICATIONS HEREIN ARE THE PROPERTY OF SCHNEIDER ELECTRIC AND SHALL NOT BE COPIED, REPRODUCED OR USED IN WHOLE OR IN PART, AS THE BASIS FOR THE MANUFACTURE OR SALE OF ITEMS WITHOUT WRITTEN PERMISSION FROM SCHNEIDER ELECTRIC. THIS DRAWING IS BASED UPON LATEST AVAILABLE INFORMATION AND IS SUBJECT TO CHANGE WITHOUT NOTICE.

**Schneider
Electric**

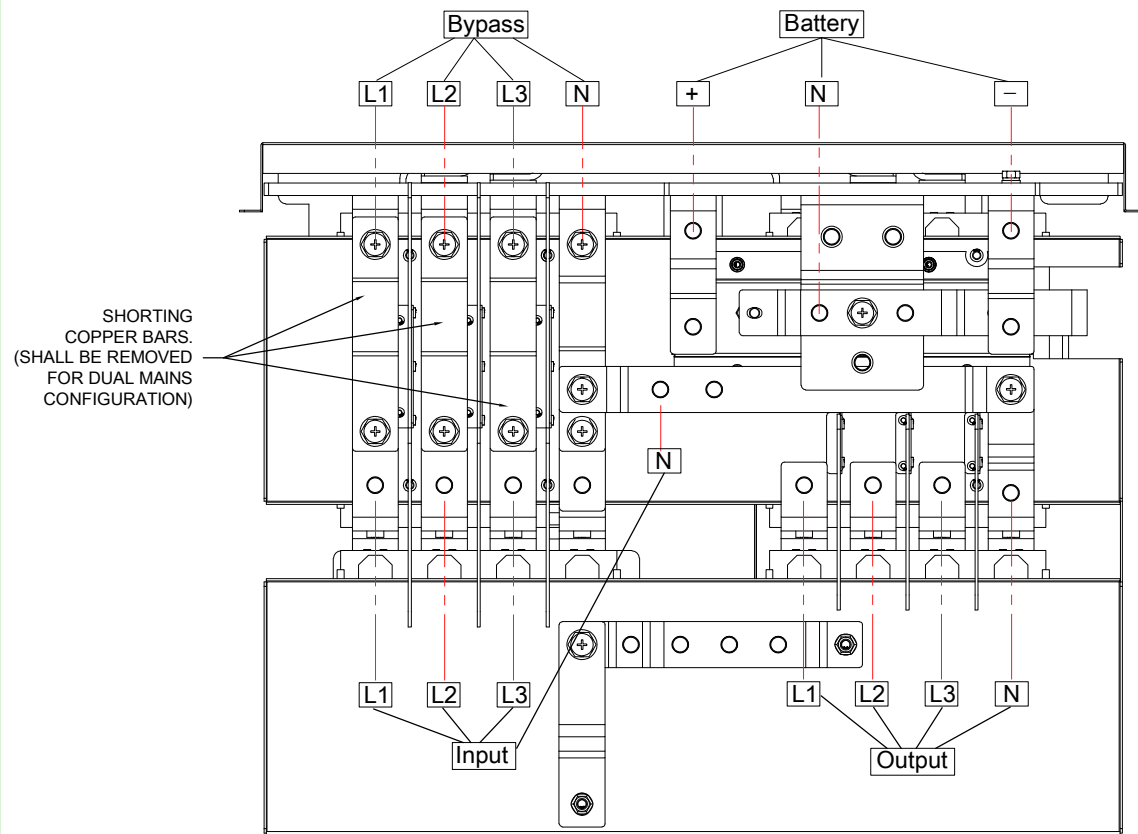
TITLE:
Schneider Electric Easy UPS 3M
200kVA, 400V, 3PH
WITHOUT BATTERY MODULES
INTERNAL FRONT AND REAR VIEW

PROJECT: SUBMITTAL DRAWINGS SHEET 3 OF 6

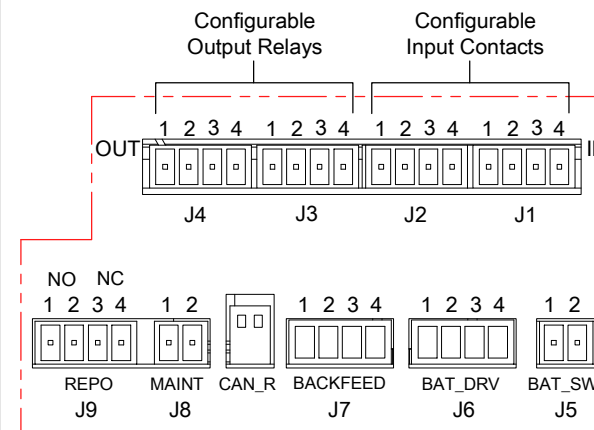
DWG NO: E3MUPS200KH

DRAWN: DIBYA/JAYAPRAKASH	11-JUN-24
ENGINEER: Compbell Bai	11-JUN-24
APPROVED: YaPing YANG	11-JUN-24

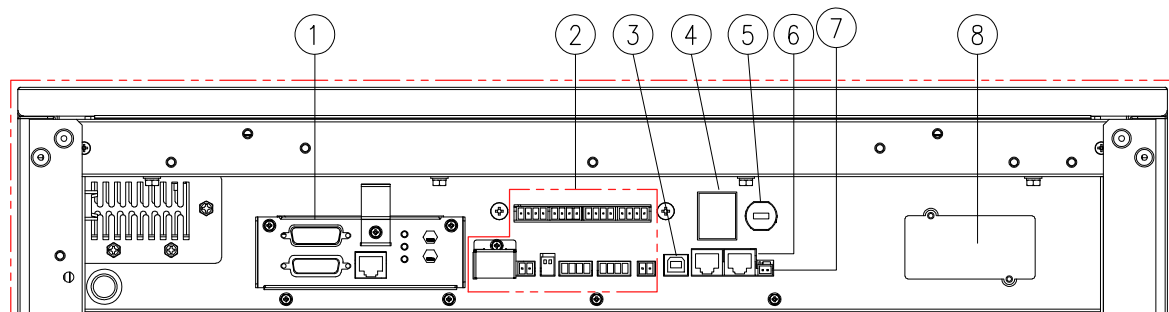
REV. 1
FIRST
ANGLE
PROJECTION



DETAIL-C, ENLARGED
CONNECTION TERMINALS

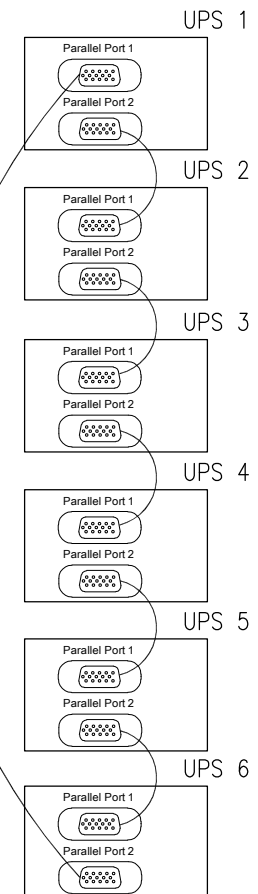


VIEW-B (ENLARGED)
INPUT CONTACTS AND OUTPUT RELAYS



VIEW-A (ENLARGED)

- ① PARALLEL PORT
- ② INPUT CONTACTS AND OUTPUT RELAYS REFER TO VIEW-B FOR DETAILS
- ③ USB PORT (FOR SERVICE)
- ④ EPO
- ⑤ SLOT FOR BATTERY COLD START BUTTON (OPTIONAL)
- ⑥ RS485
- ⑦ BATTERY TEMP. SENSOR TERMINAL
- ⑧ SLOT FOR SNMP



PARALLEL CONNECTION

VERIFY THE SETTINGS OF CAN_R
 - FOR PARALLEL SYSTEMS WITH LESS THAN 4 PARALLEL UPSs, CAN_R OF ALL UPSs MUST BE IN ON POSITION.
 - FOR PARALLEL SYSTEMS WITH MORE THAN 5 PARALLEL UPSs, CAN_R OF ALL UPSs MUST BE IN OFF POSITION.

- NOTES:
1. INSTALLATION SHALL COMPLY WITH ALL APPLICABLE NATIONAL AND LOCAL ELECTRICAL REGULATIONS.
 2. REFER TO PRODUCT DOCUMENTATION FOR ADDITIONAL DETAILS PRIOR TO INSTALLATION AND SITE PREPARATION WORK.
 3. ALL DIMENSIONS ARE IN MILLIMETERS [INCHES].
 4. UP TO 6 NUMBERS OF UPS CAN BE CONNECTED IN PARALLEL. MAXIMUM PARALLEL COMMUNICATION CABLE LENGTH IS 5.0METERS.

THIS DRAWING AND SPECIFICATIONS HEREIN ARE THE PROPERTY OF SCHNEIDER ELECTRIC AND SHALL NOT BE COPIED, REPRODUCED OR USED IN WHOLE OR IN PART, AS THE BASIS FOR THE MANUFACTURE OR SALE OF ITEMS WITHOUT WRITTEN PERMISSION FROM SCHNEIDER ELECTRIC. THIS DRAWING IS BASED UPON LATEST AVAILABLE INFORMATION AND IS SUBJECT TO CHANGE WITHOUT NOTICE.

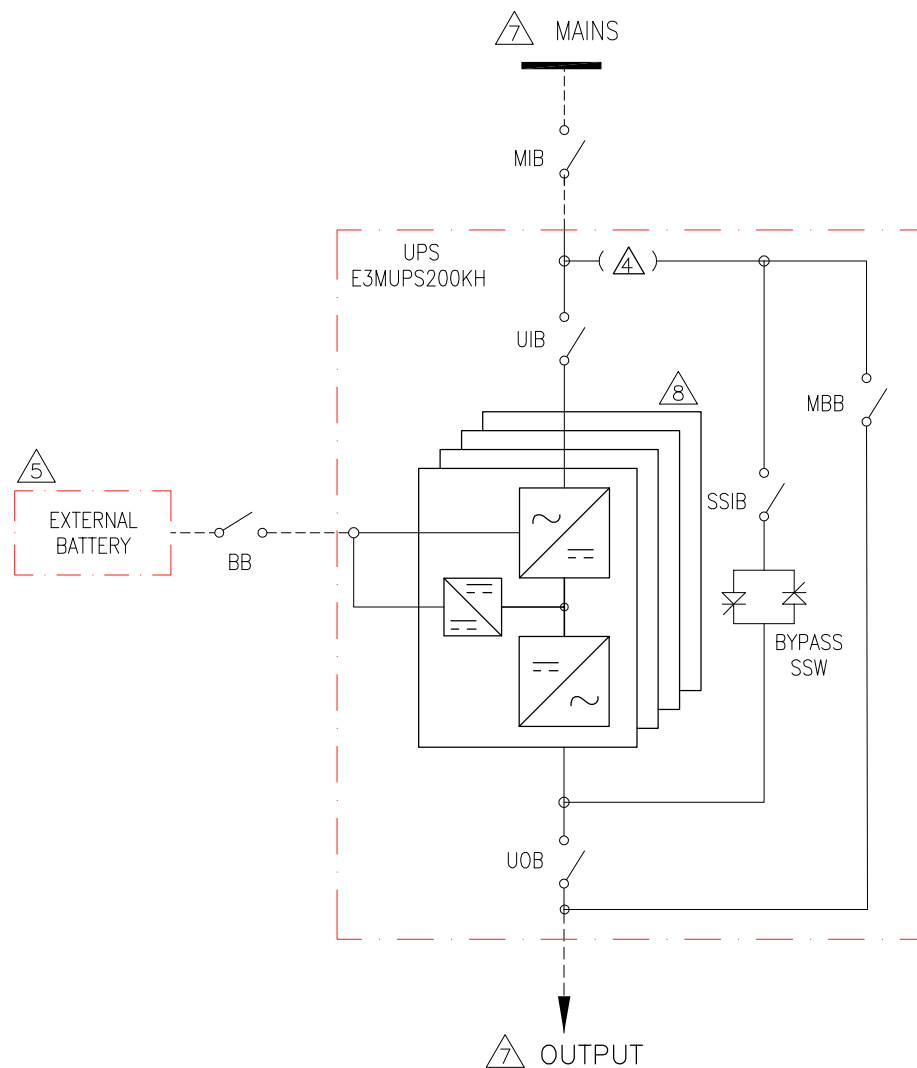
Schneider Electric

TITLE: Schneider Electric Easy UPS 3M
 200kVA, 400V, 3PH
 WITHOUT BATTERY MODULES
 ENLARGED VIEWS AND DETAILS

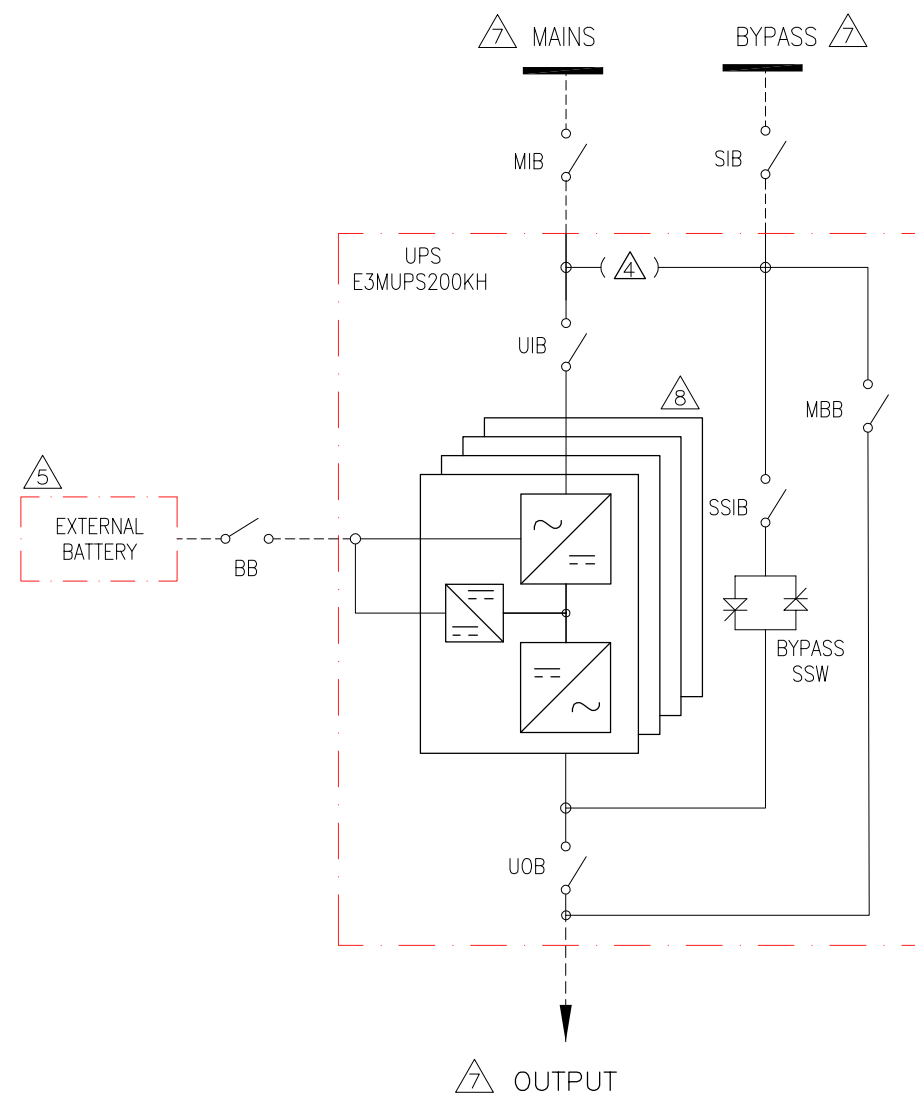
PROJECT: SUBMITTAL DRAWINGS SHEET 4 OF 6

DWG NO: E3MUPS200KH REV. 1
 DRAWN: DIBYA/JAYAPRAKASH 11-JUN-24 FIRST ANGLE
 ENGINEER: Campbell Bai 11-JUN-24 PROJECTION
 APPROVED: YoPing YANG 11-JUN-24

SINGLE MAINS CONFIGURATION



DUAL MAINS CONFIGURATION



NOTES:

1. INSTALLATION SHALL COMPLY WITH ALL APPLICABLE NATIONAL AND LOCAL ELECTRICAL REGULATIONS.
2. REFER TO PRODUCT DOCUMENTATION FOR ADDITIONAL DETAILS PRIOR TO INSTALLATION AND SITE PREPARATION WORK
3. DRAWING DEPICTS POWER SYSTEM CONNECTIONS AND IT IS NOT REPRESENTATIVE OF PHYSICAL LAYOUT.
4. SINGLE MAINS CONFIGURATION IS DEFAULT.
FOR DUAL MAINS CONFIGURATION REMOVE THE 3 SHORTING COPPER BARS.
5. BATTERIES CAN BE CONNECTED IN SERIES DEPENDING UPON THE RUNTIME REQUIREMENTS.
6. UP TO 6 UPS CAN BE CONNECTED IN PARALLEL.
7. REFER TO SHEET-6 FOR ELECTRICAL DATA.
8. 4xPOWER MODULES RATED AT 50kVA. NOT SCALABLE BUT INTERNAL REDUNDANCY IS POSSIBLE DEPENDING UPON THE LOAD REQUIREMENT.
9. CABLE LUGS ARE PROVIDED BY OTHERS.

LEGEND:

----- CABLE PROVIDED BY OTHERS

THIS DRAWING AND SPECIFICATIONS HEREIN ARE THE PROPERTY OF SCHNEIDER ELECTRIC AND SHALL NOT BE COPIED, REPRODUCED OR USED IN WHOLE OR IN PART, AS THE BASIS FOR THE MANUFACTURE OR SALE OF ITEMS WITHOUT WRITTEN PERMISSION FROM SCHNEIDER ELECTRIC. THIS DRAWING IS BASED UPON LATEST AVAILABLE INFORMATION AND IS SUBJECT TO CHANGE WITHOUT NOTICE.

Schneider Electric

TITLE:
Schneider Electric Easy UPS 3M
200kVA, 400V, 3PH
WITHOUT BATTERY MODULES
SYSTEM ONE LINE DIAGRAM

PROJECT: SUBMITTAL DRAWINGS SHEET 5 OF 6

DWG NO: E3MUPS200KH

DRAWN:	JAYAPRAKASH	09-NOV-21
ENGINEER:	Compbell Bai	09-NOV-21
APPROVED:	YaPing YANG	09-NOV-21

REV. 1
FIRST ANGLE PROJECTION

ELECTRICAL DATA SHEET	
UPS RATING	200kVA
INPUT SPECIFICATIONS	
INPUT WIRING	3W+N+PE
INPUT VOLTAGE (V)	380/400/415
NOMINAL INPUT CURRENT (A)	320/304/293
MAXIMUM INPUT CURRENT (A)	336/336/336
INPUT CURRENT LIMITATION (A)	515
INPUT FREQUENCY (Hz)	40 - 70
INPUT POWER FACTOR	>0.99
MAXIMUM INPUT SHORTCIRCUIT WITHSTAND (kA)	Icw=10
PROTECTION	FUSE
RAMP-IN (SECONDS)	7
INPUT THDI - LINEAR LOAD	< 3% OF LINEAR LOADS
BYPASS SPECIFICATIONS	
BYPASS WIRING	3W+N+PE
OVERLOAD CAPACITY	110% FOR 60 MINUTES
	130% FOR 10 MINUTES
	130-150% FOR 1 MINUTE
BYPASS VOLTAGE (V)	380/400/415
MINIMUM BYPASS VOLTAGE (V)	266/280/291
MAXIMUM BYPASS VOLTAGE (V)	475/480/477
NOMINAL BYPASS CURRENT (A)	307/292/281
BYPASS FREQUENCY (Hz)	50/60
MAXIMUM INPUT SHORTCIRCUIT WITHSTAND (kA)	Icw=10
OUTPUT SPECIFICATIONS	
OUTPUT WIRING	3W+N+PE
OVERLOAD CAPACITY AT 30°C	110% FOR 60 MINUTES
	125% FOR 10 MINUTES
	150% FOR 1 MINUTE
OUTPUT VOLTAGE (V)	380/400/415 (±1%)
NOMINAL OUTPUT CURRENT (A)	304/289/278
OUTPUT FREQUENCY (Hz)	50/60
OUTPUT POWER FACTOR	1
OUTPUT THDU	<3%@ 100% LINEAR LOAD, < 5%@ 100% NON-LINEAR LOAD
BATTERY SPECIFICATIONS	
CHARGING POWER IN % OF OUTPUT POWER	1-24%
MAXIMUM CHARGING POWER (W)	48000
NOMINAL BATTERY VOLTAGE (32-50 Blocks) (VDC)	±192 to ±300
NOMINAL FLOAT VOLTAGE (32-50 Blocks) (VDC)	±215.5 to ±337.5
END OF DISCHARGE VOLTAGE (32-50 Blocks) (VDC)	±153.6 to ±240
BATTERY CURRENT AT FULL LOAD AND NOMINAL BATTERY VOLTAGE (36-50 Blocks) (A)	490-351
BATTERY CURRENT AT FULL LOAD AND MINIMUM BATTERY VOLTAGE (36-50 Blocks) (A)	616-441
TEMPERATURE COMPENSATION (PER CELL) IF THE TEMPERATURE IS AVOVE 28°C	PROGRAMMABLE FROM 0-7mV. DEFAULT IS 3mV
RIPPLE CURRENT	<5% C10

RECOMMENDED CABLE SIZES 200kVA UPS			
	CABLE SIZE PER PHASE (mm²)	NEUTRAL CABLE SIZE (mm²)	PE CABLE SIZE (mm²)
INPUT	150	150	95
BYPASS	150	150	95
OUTPUT	150	150	95
BATTERY	2x120	2x120	120

- NOTES:
- 1.INSTALLATION SHALL COMPLY WITH ALL APPLICABLE NATIONAL AND LOCAL ELECTRICAL REGULATIONS.
 - 2.REFER TO PRODUCT DOCUMENTATION FOR ADDITIONAL DETAILS PRIOR TO INSTALLATION AND SITE PREPARATION WORK.

THIS DRAWING AND SPECIFICATIONS HEREIN ARE THE PROPERTY OF SCHNEIDER ELECTRIC AND SHALL NOT BE COPIED, REPRODUCED OR USED IN WHOLE OR IN PART, AS THE BASIS FOR THE MANUFACTURE OR SALE OF ITEMS WITHOUT WRITTEN PERMISSION FROM SCHNEIDER ELECTRIC. THIS DRAWING IS BASED UPON LATEST AVAILABLE INFORMATION AND IS SUBJECT TO CHANGE WITHOUT NOTICE.



TITLE:
Schneider Electric Easy UPS 3M
200kVA, 400V, 3PH
WITHOUT BATTERY MODULES
ELECTRICAL DATA

PROJECT: SUBMITTAL DRAWINGS SHEET 6 OF 6

DWG NO: E3MUPS200KH

DRAWN: JAYAPRAKASH 03-JUN-19

ENGINEER: Compbell Bai 06-JUN-19

APPROVED: YaPing YANG 06-JUN-19

REV. 0

FIRST

PROJECTION

N.A